

Kreuzheim

Wiener Straße 44 · 10999 Berlin

Grundriss WE 11

Lage 3. OG*

Zimmer 2

Wohnfläche** 66,61 m²

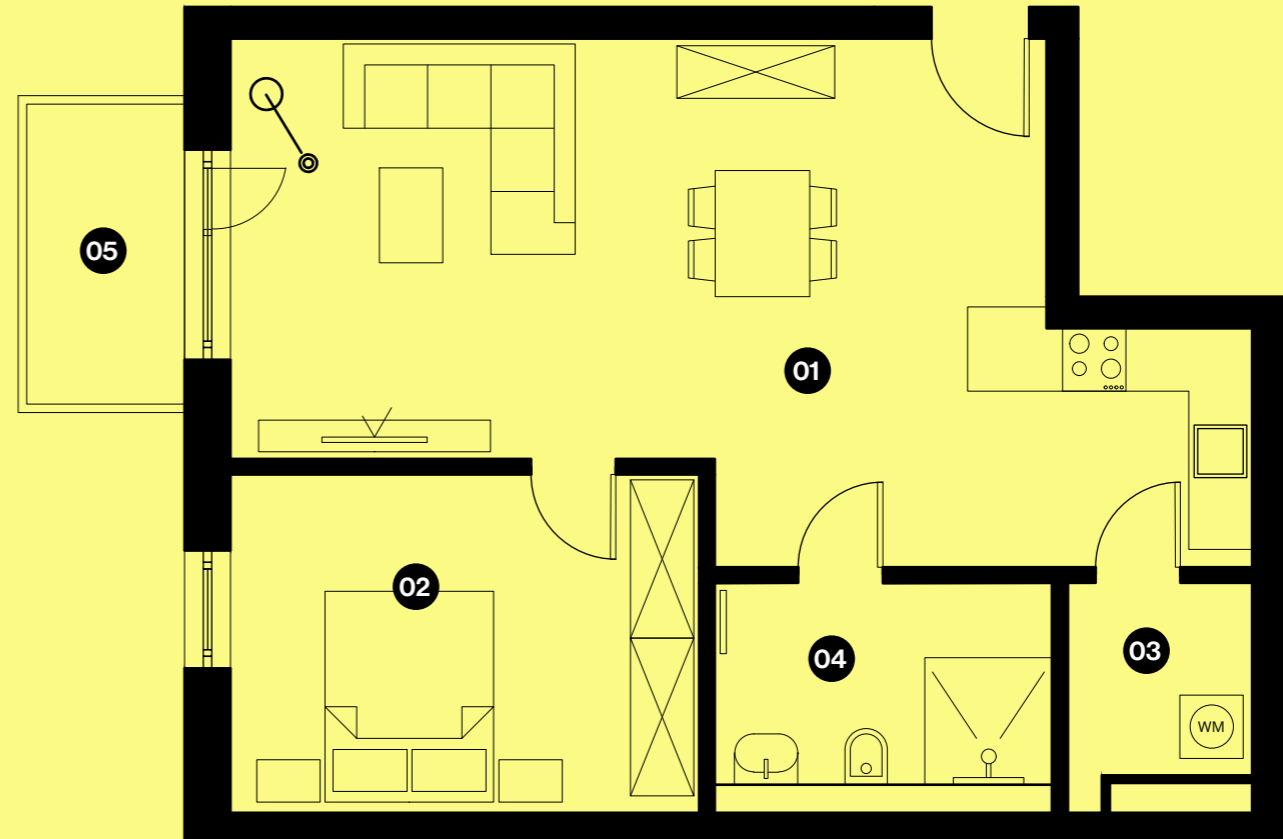
01 Wohnküche 39,59 m²

02 Schlafen 14,59 m²

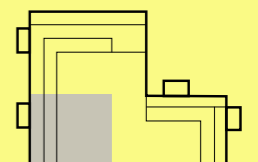
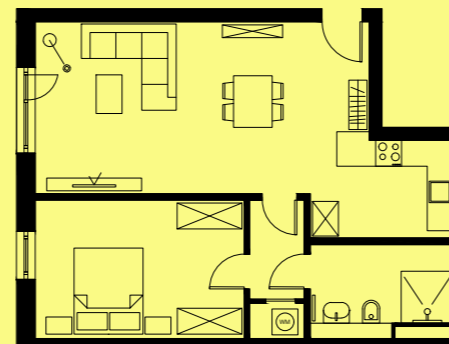
03 Abstellraum 3,17 m²

04 Bad 7,12 m²

05 Balkon 4,27 m²



Alternativer Grundriss:



* Barrierefrei

** Balkone und Terasse zählen zu 50% zur Wohnfläche.